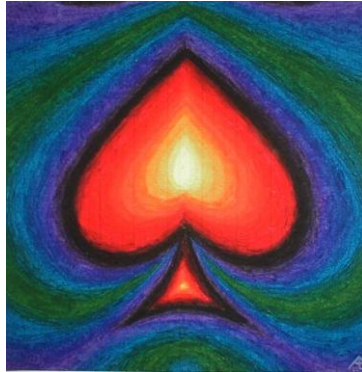


Super Spade



Version 2

Mark Donovan

July 2007

Introduction

The following system has been designed to take into consideration the fact that the most popular contract in duplicate bridge is usually spades. Whoever has spades ends up winning the auction. Playing in spades also usually scores better than playing in a minor.

The first radical step of the system is that an opening bid of 1C shows 4+ spades. Since 1C can be forcing to at least 1S, it is also overloaded to show all 22+ hcp hands.

An opening bid of 1S, shows 8-12 hcps, less points than an opening hand. It could be as short as 4+ spades.

The 1NT opening bid varies by vulnerability. An opening of 1NT not vulnerable shows 10-12 hcps, while a bid of 1NT vulnerable shows 12-14.

In 3rd seat, the system becomes 1C precision, with other bids showing 8-15 hcps. 1NT shows 12-15.

All opening 2 bids in all seats show 11-15 hcps and a 6+ card suit. The exception being 2S in seats 1-3. This bid shows a hand with a super weak 2.

The System:

1st and 2nd seat:

An opening bid of 1C = 11-21 hcps with 4+ spades or 22+. When responding to 1C, a bid of 1D shows 3+ spades and is forcing. 1H is natural, and 1S shows a hand with < 6 hcps. All other bids are natural eg. 1NT = 6-10, 2C = 11+ hcps 5+ clubs < 2 spades.

Responses to 1C	
1D	3+ spades, 6+ hcps (possibly a good 5)
1H	4+ hearts, 6+ hcps
1S	< 6 hcps <= 2 spades
1NT	6-10 hcps <= 2 spades
2C	10+, 5+ clubs
2D	10+, 5+ diamonds
2H	0-6, 6+ hearts
2S	This raise shows at least 3 spades < 6 hcps.
2NT	11-12 hcps, <= 2 spades inv to 3NT
3C	6-10 hcps, 5+ spades
3D	11-12 hcps 5+ spades
3H	
3S	< 6 hcps, 5+ spades

3NT	To play
4C, 4D, 4H	Splinter in support of spades, at least 4 card support and game forcing values.
4NT	Keycard in spades.
5C, 5D, 5H	Exclusion in spades.

When responding to 1C – 1D, all bids are natural, rebidding 2 of a minor, should have 4 spades with a longer minor.

A rebid of 2C over 1C-1S, shows 22+ hcps and is forcing. Standard responses to a 2C opening bid are adopted. 1C – 1S – 2C – 2D = semi-positive, 2H = bust, 2NT = hearts positive, etc.

If you have 22 hcps, and your partner responds anything other than 1S, you need to be creative.

If you have a hand in the NT range, but with 4 spades, you have the liberty to choose your opening bid.

An opening bid of 1D is a catchall for hands with no 4 card major, and no 6 card minor. 2245, 2254, 1245, 1254, 2145, 2154, and balanced hands which are not in the current NT range 2344, and 3244.

Responses to 1D	
1H	4+ hearts, 6+ hcps
1S	4+ spades, 6+ hcps
1NT	6-10 hcps
2C	10+, 5+ clubs
2D	10+, 5+ diamonds
2H	0-6, 6+ hearts
2S	0-6, 6+ spades
2NT	11-12 hcps
3C	0-6, 5+ clubs, pre-emptive
3D	0-6, 5+ diamonds, pre-emptive
3H	0-6, 7+ hearts.
3S	0-6, 7+ spades
3NT	To play
4C, 4D	0-6, 7+ minor
4NT	Keycard in diamonds

An opening bid of 1H = 11-21 with 4+ hearts (could have a longer minor). Responses to this bid are all natural, with the exception of 3C and 3D are Bergen (5 card support 10-12, and 6-10 respectively) raises. A 1NT response is not forcing, and 2NT is natural. All hands which start 1H and are >16 need to jump at there next chance to show extras.

An opening bid of 1S is 8-12 and 4+ spades. This bid shows less then a regular opening bid. Only open 1S if the hand is not a Bergen 20.

Responses to 1S	
1NT	8-13 hcps.
2C	15+, 4+ clubs
2D	15+, 4+ clubs
2H	15+, 5+ hearts
2S	< 13, 3+ spades (NV), 4+ spades (V)
2NT	13-15 hcps
3C	0-13, 6+ clubs, pre-emptive
3D	0-13, 6+ diamonds, pre-emptive
3H	0-13, 6+ hearts, pre-emptive
3S	0-13, 4+ spades(NV), 5+ spades(V), pre-emptive
3NT	To play
4C, 4D, 4H	Splinter
4NT	Keycard in spades

After an opening bid of 1NT all responses are standard. Transfers, Stayman.

Responding to 2 level openers:

After an opening bid of 2C, 2D is the only forcing bid. Opener should bid a 3 card major if they have one. (Any 4 card major should be opened at the 1 level should they have it) Rebid 3C with a weak club suit, 2NT with a stronger hand. Any bid opener makes after a 2D bid is forcing to game. Ex. 2C – 2D – 2H – 2S forcing. A 2NT response is invitational and natural. 2 of a major response to 2C is non-forcing and to play. Opener can bid again with something extra, eg 3 card support.

After a 2D opening bid, 3C becomes forcing, and opener should rebid 3 card majors up the line. 2 of a major is non-forcing. 2NT is natural invitational.

After 2H, 2S is to play, 2NT is invitational, 3C shows 3+ hearts 10-12 hcps, and 3D shows 3+ hearts 6-10 points.

After 2S, 2NT asks for quality of your hand. 3C says 5 card suit. 3D = 6+ spades super bad, 3H = 6+spades, medium, 3S = 6+ spades fine.

2NT = 20-21

3rd seat:

1C = 16+ hcps.

Responses to 1C in 3rd seat	
1D	4-7 hcps
1H	0-4 hcps
1S	8-10 hcps balanced.
1NT, 2C, 2D	Transfer positives.
2H	Weak with hearts

2S	Weak with spades
2NT	11-12 hcps

All asking bids are on. There is no spades positive, because you would have opened one.

Opening 1D, 1H, 1S = 8-15 4+ card suit. When responding 1S, this bid shows < 8 hcps. 1NT shows 8-12.

4th seat:

All opening bids are natural. 5 card majors. 1NT = 15-17. 2 Level bids are still 11-15 6+ card suit.

Interference

1C – (1H) – X shows 3 spades.

1C – (2C or 2D) – X shows 4+ hearts

1D – (1H) – X shows 5+ spades (Super negative double)

1D – (1S) – X shows 5+ hearts (Super negative double)

1S – (2m) – X shows 4 hearts